



TEAM
BASKETBALL
2013



01 MERCHANDISING

12 FOOTWEAR

16 APPAREL

24 TEAM UNIFORMS





MERCHANDISING



**A. Team Workout Ready
LS Solid Tech Top**
Suggested Retail \$30.00
R0051
Z56329 excellent red
Z56331 medium grey heather

**B. Team Workout Ready
SS Solid Tech Top**
Suggested Retail \$25.00
R0521
Z56287 excellent red
Z56289 medium grey heather

C. Zig Reversible Jersey
Suggested Retail \$35.00
R0571
Q25249 red

D. Zig Reversible Short
Suggested Retail \$40.00
R0002
Q25241 red

E. Kamikazi II Mid
Suggested Retail \$99.99
R0055
V61030 reebok red/white

F. Pumpspective Omni
Suggested Retail \$124.99
R5786
V55454 black/white/slam orange
V55465 white/black/slam orange

G. ZigKick Hoops
Suggested Retail \$84.99
R5764
MEN:
V61016 white/reebok red/black
WOMEN:
V61096 white/reebok red/black

H. ZigTech Crew Sock
Suggested Retail \$12.00
R006
rbk red/white
Q25721 S (3.5 - 7)
Q25713 M (7.5 - 9)
Q25749 L (9.5 - 12)
Q25769 XL (12.5 - 15)

I. Classic Dropped R Sock
Suggested Retail \$12.00
R006
D01427 black/white
D01530 white/black



**A. Team Workout Ready
Brushed Back Fleece Hoody**

Suggested Retail \$55.00

R0572

Z56340 black

Z56341 gravel melange

**B. Team Workout Ready
Brushed Back Fleece Pant**

Suggested Retail \$50.00

R0052

Z56343 black

Z56344 gravel melange

**C. Team Warm Up Top
D. Team Warm Up Pant**

MEN:

Suggested Retail \$65.00, \$40.00

R0523, R0002

I32220 red/white - top

I32222 black/white - pant

WOMEN:

Suggested Retail \$60.00, \$36.00

R0003, R0081

I32210 red/white - top

I32212 black/white - pant

**E. Sport Essentials
LS Compression Top**

Suggested Retail \$30.00

R0051

I32446 black

I32447 white

I32431 dark grey heather

**F. Sport Essentials
SS Compression Top**

Suggested Retail \$25.00

R0521

I32442 black

I32443 white

I32445 dark grey heather

G. Sleeveless Compression Top

Suggested Retail \$25.00

R0521

I32440 black

I15331 white

**H. Team Workout Ready
10\"/>**

Suggested Retail \$30.00

R0051

Z56336 excellent red

I. ZigKick

Suggested Retail \$84.99

R5764

V47690 red attack/black/white

J. RealFlex Slide II

Suggested Retail \$39.99

R0022

J99553 black/silver



**A. Team Workout Ready
LS Solid Tech Top**
Suggested Retail \$30.00
R0051
Z56333 reebok royal
Z56331 medium grey heather

**B. Team Workout Ready
SS Solid Tech Top**
Suggested Retail \$25.00
R0521
Z56326 reebok royal
Z56289 medium grey heather

C. Zig Reversible Jersey
Suggested Retail \$35.00
R0571
Q25250 royal

D. Zig Reversible Short
Suggested Retail \$40.00
R0002
Q25242 royal

E. Kamikazi II Mid
Suggested Retail \$99.99
R0055
V61033 reebok royal/white

F. Pumpspective Omni
Suggested Retail \$124.99
R5786
V55454 black/white/slam orange
V55465 white/black/slam orange

G. ZigKick Hoops
Suggested Retail \$84.99
R5764
MEN:
V46235 white/reebok royal/black
WOMEN:
V61098 white/reebok royal/black

H. ZigTech Crew Sock
Suggested Retail \$12.00
R006
reebok royal/white
Q25722 S (3.5 - 7)
Q25717 M (7.5 - 9)
Q25719 L (9.5 - 12)
Q25777 XL (12.5 - 15)

I. Classic Dropped R Sock
Suggested Retail \$12.00
R006
D01427 black/white
D01530 white/black



**A. Team Workout Ready
Brushed Back Fleece Hoody**

Suggested Retail \$55.00

R0572

Z56340 black

Z56341 gravel melange

**B. Team Workout Ready
Brushed Back Fleece Pant**

Suggested Retail \$50.00

R0052

Z56343 black

Z56344 gravel melange

**C. Team Warm Up Top
D. Team Warm Up Pant**

MEN:

Suggested Retail \$65.00, \$40.00

R0523, R0002

I32218 reebok royal/white - top

I32222 black/white - pant

WOMEN:

Suggested Retail \$60.00, \$36.00

R0003, R0081

I32208 reebok royal/white - top

I32212 black/white - pant

**E. Sport Essentials
LS Compression Top**

Suggested Retail \$30.00

R0051

I32446 black

I32447 white

I32431 dark grey heather

**F. Sport Essentials
SS Compression Top**

Suggested Retail \$25.00

R0521

I32442 black

I32443 white

I32445 dark grey heather

G. Sleeveless Compression Top

Suggested Retail \$25.00

R0521

I32440 black

I15331 white

**H. Team Workout Ready
10" Solid Stretch Knit Short**

Suggested Retail \$30.00

R0051

Z57994 reebok royal

I. ZigKick

Suggested Retail \$84.99

R5764

V47688 blue sport/black/white

J. RealFlex Slide II

Suggested Retail \$39.99

R0022

J99553 black/silver



**A. Team Workout Ready
LS Solid Tech Top**
Suggested Retail \$30.00
R0051
Z56330 athletic navy
Z56331 medium grey heather

**B. Team Workout Ready
SS Solid Tech Top**
Suggested Retail \$25.00
R0521
Z56288 athletic navy
Z56289 medium grey heather

C. Zig Reversible Jersey
Suggested Retail \$35.00
R0571
Q25248 navy

D. Zig Reversible Short
Suggested Retail \$40.00
R0002
Q25240 navy



E. Kamikazi II Mid
Suggested Retail \$99.99
R0055
V61031 athletic navy/white

F. Pumpspective Omni
Suggested Retail \$124.99
R5786
V55454 black/white/slam orange
V55465 white/black/slam orange



G. ZigKick Hoops
Suggested Retail \$84.99
R5764
MEN:
V61018 white/athletic navy/black
WOMEN:
V61094 white/athletic navy/black



H. ZigTech Crew Sock
Suggested Retail \$12.00
R006
athletic navy/white
Q25742 S (3.5 - 7)
Q25755 M (7.5 - 9)
Q25726 L (9.5 - 12)
Q25772 XL (12.5 - 15)

I. Classic Dropped R Sock
Suggested Retail \$12.00
R006
D01427 black/white
D01530 white/black



**A. Team Workout Ready
Brushed Back Fleece Hoody**

Suggested Retail \$55.00

R0572

Z56340 black

Z56341 gravel melange

**B. Team Workout Ready
Brushed Back Fleece Pant**

Suggested Retail \$50.00

R0052

Z56343 black

Z56344 gravel melange

**C. Team Warm Up Top
D. Team Warm Up Pant**

MEN:

Suggested Retail \$65.00, \$40.00

R0523, R0002

I32217 navy/white - top

I32223 navy/white - pant

WOMEN:

Suggested Retail \$60.00, \$36.00

R0003, R0081

I32215 navy/white - top

I32213 navy/white - pant

**E. Sport Essentials
LS Compression Top**

Suggested Retail \$30.00

R0051

I32446 black

I32447 white

I32431 dark grey heather

**F. Sport Essentials
SS Compression Top**

Suggested Retail \$25.00

R0521

I32442 black

I32443 white

I32445 dark grey heather

G. Sleeveless Compression Top

Suggested Retail \$25.00

R0521

I32440 black

I15331 white

**H. Team Workout Ready
10" Solid Stretch Knit Short**

Suggested Retail \$30.00

R0051

Z56338 athletic navy

I. ZigKick

Suggested Retail \$84.99

R5764

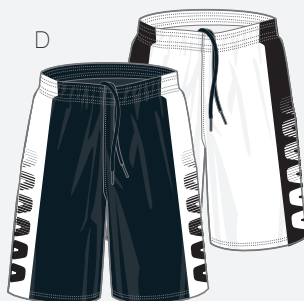
V45549 rivet grey/black/pure silver

J. RealFlex Slide II

Suggested Retail \$39.99

R0022

J99553 black/silver



**A. Team Workout Ready
LS Solid Tech Top**
Suggested Retail \$30.00
R0051
Z56327 black
Z56331 medium grey heather

**B. Team Workout Ready
SS Solid Tech Top**
Suggested Retail \$25.00
R0521
Z56280 black
Z56289 medium grey heather

C. Zig Reversible Jersey
Suggested Retail \$35.00
R0571
Q25247 black

D. Zig Reversible Short
Suggested Retail \$40.00
R0002
Q25239 black

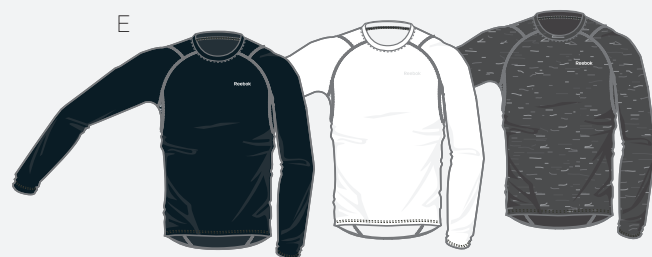
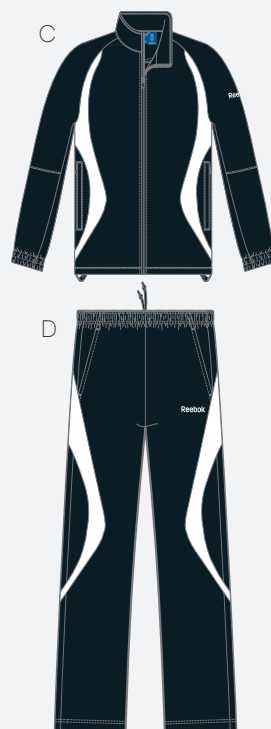
E. Kamikazi II Mid
Suggested Retail \$99.99
R0055
V61032 black/white

F. Pumpspective Omni
Suggested Retail \$124.99
R5786
V55454 black/white/slam orange
V55465 white/black/slam orange

G. ZigKick Hoops
Suggested Retail \$84.99
R5764
MEN:
V47016 black/white/blazing orange
V61017 white/black
WOMEN:
V61091 black/white/blazing orange
V61095 white/black

H. ZigTech Crew Sock
Suggested Retail \$12.00
R006
black/white white/black
Q25739 Q25716 S (3.5 - 7)
Q25746 Q25743 M (7.5 - 9)
Q25744 Q25728 L (9.5 - 12)
Q25767 Q25750 XL (12.5 - 15)

I. Classic Dropped R Sock
Suggested Retail \$12.00
R006
D01427 black/white
D01530 white/black



**A. Team Workout Ready
Brushed Back Fleece Hoody**

Suggested Retail \$55.00

R0572

Z56340 black

Z56341 gravel melange

**B. Team Workout Ready
Brushed Back Fleece Pant**

Suggested Retail \$50.00

R0052

Z56343 black

Z56344 gravel melange

**C. Team Warm Up Top
D. Team Warm Up Pant**

MEN:

Suggested Retail \$65.00, \$40.00

R0523, R0002

I32216 black/white - top

I32222 black/white - pant

WOMEN:

Suggested Retail \$60.00, \$36.00

R0003, R0081

I32214 black/white - top

I32212 black/white - pant

**E. Sport Essentials
LS Compression Top**

Suggested Retail \$30.00

R0051

I32446 black

I32447 white

I32431 dark grey heather

**F. Sport Essentials
SS Compression Top**

Suggested Retail \$25.00

R0521

I32442 black

I32443 white

I32445 dark grey heather

G. Sleeveless Compression Top

Suggested Retail \$25.00

R0521

I32440 black

I15331 white

**H. Team Workout Ready
10" Solid Stretch Knit Short**

Suggested Retail \$30.00

R0051

Z56335 black

I. ZigKick

Suggested Retail \$84.99

R5764

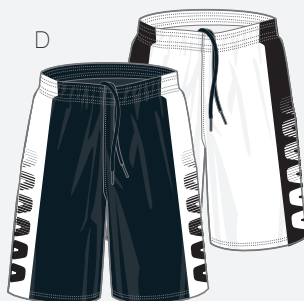
V45549 rivet grey/black/pure silver

J. RealFlex Slide II

Suggested Retail \$39.99

R0022

J99553 black/silver



A. Team Workout Ready
LS Solid Tech Top
 Suggested Retail \$30.00
 R0051
 Z56332 team dark green
 Z56331 medium grey heather

B. Team Workout Ready
SS Solid Tech Top
 Suggested Retail \$25.00
 R0521
 Z56325 team dark green
 Z56289 medium grey heather

C. Zig Reversible Jersey
 Suggested Retail \$35.00
 R0571
 Q25247 black

D. Zig Reversible Short
 Suggested Retail \$40.00
 R0002
 Q25239 black

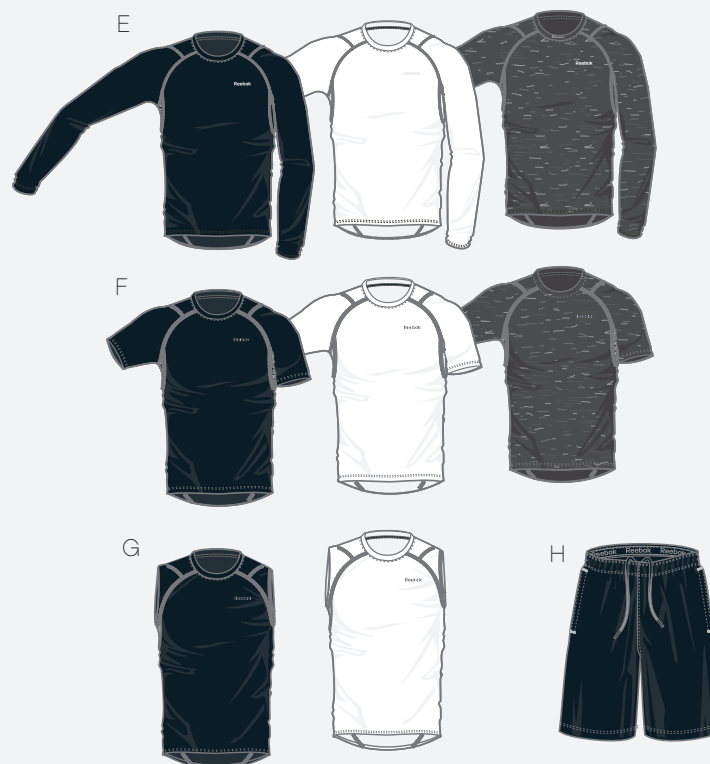
E. Kamikazi II Mid
 Suggested Retail \$99.99
 R0055
 V61034 team dark green/white

F. Pumpspective Omni
 Suggested Retail \$124.99
 R5786
 V55454 black/white/slam orange
 V55465 white/black/slam orange

G. ZigKick Hoops
 Suggested Retail \$84.99
 R5764
 MEN:
 V47016 black/white/blazing orange
 V61017 white/black
 WOMEN:
 V61091 black/white/blazing orange
 V61095 white/black

H. ZigTech Crew Sock
 Suggested Retail \$12.00
 R006
 black/white white/black
 Q25739 Q25716 S (3.5 - 7)
 Q25746 Q25743 M (7.5 - 9)
 Q25744 Q25728 L (9.5 - 12)
 Q25767 Q25750 XL (12.5 - 15)

I. Classic Dropped R Sock
 Suggested Retail \$12.00
 R006
 D01427 black/white
 D01530 white/black



**A. Team Workout Ready
Brushed Back Fleece Hoody**

Suggested Retail \$55.00

R0572

Z56340 black

Z56341 gravel melange

**B. Team Workout Ready
Brushed Back Fleece Pant**

Suggested Retail \$50.00

R0052

Z56343 black

Z56344 gravel melange

**C. Team Warm Up Top
D. Team Warm Up Pant**

MEN:

Suggested Retail \$65.00, \$40.00

R0523, R0002

I32219 team dark green/white - top

I32222 black/white - pant

WOMEN:

Suggested Retail \$60.00, \$36.00

R0003, R0081

I32209 team dark green/white - top

I32212 black/white - pant

**E. Sport Essentials
LS Compression Top**

Suggested Retail \$30.00

R0051

I32446 black

I32447 white

I32431 dark grey heather

**F. Sport Essentials
SS Compression Top**

Suggested Retail \$25.00

R0521

I32442 black

I32443 white

I32445 dark grey heather

G. Sleeveless Compression Top

Suggested Retail \$25.00

R0521

I32440 black

I15331 white

**H. Team Workout Ready
10" Solid Stretch Knit Short**

Suggested Retail \$30.00

R0051

Z56335 black

I. ZigKick

Suggested Retail \$84.99

R5764

V45549 rivet grey/black/pure silver

J. RealFlex Slide II

Suggested Retail \$39.99

R0022

J99553 black/silver



Kamikaze II Mid

Men's Sizes: 6.5 - 13, 14, 15

Intro Date: 9/2013

R0055

Suggested Retail: \$99.99

- a. V61032 black/white
- b. V61031 athletic navy/white
- c. V61030 reebok red/white
- d. V61033 reebok royal/white
- e. V61034 team dark green/white

Feature/Benefits: Men's on court basketball shoe with Hexalite for cushioning • Mid-cut design provides added stability and support



Pumpspective Omni

Men's Sizes: 6.5 - 14, 15, 16, 17, 18

Intro Date: 9/2013

R5786

Suggested Retail: \$124.99

- a. V55454 black/white/slam orange
- b. V55465 white/black/slam orange

Feature/Benefits: Men's on court basketball shoe provides the maximum in cushioning and custom fit • DMX Foam, a proprietary foam formulation, delivers a cushioned ride in a longer lasting, more lively feeling system



Notes

ZigKick Hoops

R5764

Suggested Retail: \$84.99

Men's Sizes: 6.5 - 13, 14, 15

Intro Date: See colorways

- a. V46235 white/reebok royal/black - 8/2013
- b. V47016 black/white/blazing orange - 8/2013
- c. V61018 white/athletic navy/black - 9/2013
- d. V61016 white/reebok red/black - 9/2013
- e. V61017 white/black - 9/2013

Women's Sizes: 5 - 11, 12

Intro Date: 9/2013

- a. V61098 white/reebok royal/black
- b. V61091 black/white/blazing orange
- c. V61094 white/athletic navy/black
- d. V61096 white/reebok red/black
- e. V61095 white/black



Feature/Benefits: A basketball shoe for both men and women with sleek looks designed for comfort and movement • Leather and mesh upper for comfort, support and breathability • Mid-cut design for stability and support • Removable sockliner for cushioning; removes to accommodate orthotics • Incorporates ZigTech technology with unique zigzag shaped sole for responsive cushioning • High abrasion rubber outsole for durability

W ZIGKICK

ZigKick

Men's Sizes: 6.5 - 13, 14, 15

R5764

Suggested Retail: \$84.99

- a. V45549 rivet grey/black/pure silver
- b. V47688 blue sport/black/white
- c. V47690 red attack/black/white



Feature/Benefits: Men's running shoe designed with unique energy return along the sole for enhanced cushioning • Vertical and horizontal cushioning • Synthetic/mesh upper for comfort, fit and durability • Removable sockliner accommodates orthotics • Upper support design provides lateral support and stability • High abrasion rubber outsole for durability

W ZIGKICK

Notes

ZigEnergy Ref

Men's Sizes: 7 - 14, 15, 16

R0055

Suggested Retail: \$99.99

a. J83910 black/black/black

Feature/Benefits: Men's referee shoe is designed with unique energy return along the sole for enhanced cushioning • Vertical and horizontal cushioning • SmoothFit smooth seamed upper for comfort • Synthetic upper provides comfort and lightweight • Low-cut design provides added mobility • Removable Ortholite® foam sockliner accommodates orthotics • Forefoot flex grooves for flexibility • Multi-surface outsole for traction

WZIGTECH



RealFlex Slide II

Men's Sizes: 7 - 15 (whole sizes)

R0022

Suggested Retail: \$39.99

a. J99553 black/silver

Feature/Benefits: Men's sport sandal with multi-direction flex nodes for natural motion • Slip-on construction for easy on/off • Adjustable strap allows for a customized fit • Synthetic upper provides comfort and lightweight • CMEVA molded footbed for extra cushioning • Forefoot flex grooves for flexibility • High abrasion IMEVA outsole for durability and cushioning • Packaging: Box with J Clip

REALFLEX



Notes



Workout Ready Training

The Workout Ready collection by Reebok features a casual, comfortable mix of fitness essentials designed to be versatile for home, gym and play.

Zig Reversible Jersey

Features/Benefits: 100% polyester • PlayDry • Reversible



Men's Sizes: S, M, L, XL, 2XL

R0571

Suggested Retail: \$35.00

Q25247 black
Q25248 navy
Q25249 red
Q25250 royal



Zig Reversible Short

Men's Sizes: S, M, L, XL, 2XL

R0002

Suggested Retail: \$40.00

Q25239 black
Q25240 navy
Q25241 red
Q25242 royal



Notes

Team Workout Ready LS Solid Tech Top

Men's Sizes: S, M, L, XL, 2XL, 3XL
R0051

Suggested Retail: \$30.00

| | |
|--------|---------------------|
| Z56327 | black |
| Z56328 | white |
| Z56329 | excellent red |
| Z56330 | athletic navy |
| Z56331 | medium grey heather |
| Z56332 | team dark green |
| Z56333 | reebok royal |

Features/Benefits: Lightweight PlayDry knit interlock • Set-in long sleeve tee • MGH back neck taping • DTM panels at front • PlayDry heat transfer at back right • Reebok heat transfer at left shoulder • Regular fit • 100% polyester, single jersey, 140 grams



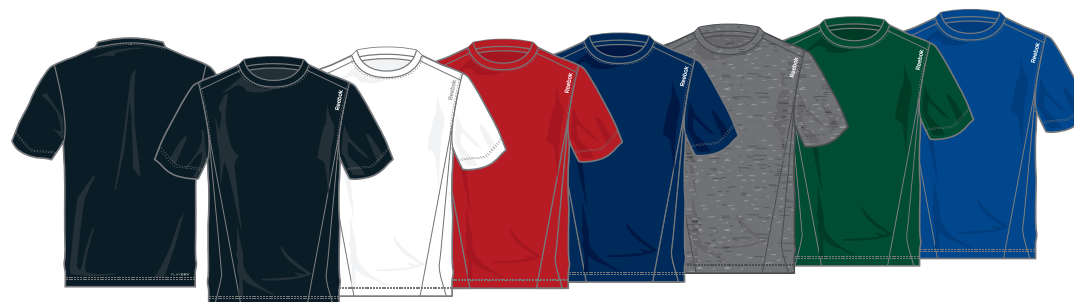
Team Workout Ready SS Solid Tech Top

Men's Sizes: S, M, L, XL, 2XL, 3XL
R0521

Suggested Retail: \$25.00

| | |
|--------|---------------------|
| Z56280 | black |
| Z56281 | white |
| Z56287 | excellent red |
| Z56288 | athletic navy |
| Z56289 | medium grey heather |
| Z56325 | team dark green |
| Z56326 | reebok royal |

Features/Benefits: Lightweight PlayDry knit interlock • Set-in short sleeve tee • MGH back neck taping • DTM panels at front • PlayDry heat transfer at back right • Reebok heat transfer at left shoulder • Regular fit • 100% polyester, single jersey, 140 grams



Team Workout Ready 10" Solid Stretch Knit Short

Men's Sizes: S, M, L, XL, 2XL, 3XL
R0051

Suggested Retail: \$30.00

| | |
|--------|---------------|
| Z56335 | black |
| Z56336 | excellent red |
| Z56338 | athletic navy |
| Z57995 | flat grey |
| Z57994 | reebok royal |

Features/Benefits: Lightweight PlayDry stretch knit short • Side seam pockets with contrast bar tacks • Contrast stitching at side panel • Two tone drawcords with adjustable waist • Reebok branded jacquard waistband • PlayDry heat transfer at back right • Reebok heat transfer at lower leg • 10" inseam • Regular fit



Team Workout Ready Brushed Back Fleece Hoody

Men's Sizes: S, M, L, XL, 2XL, 3XL
R0572

Suggested Retail: \$55.00

Z56340 black
Z56341 gravel melange

Feature/Benefits: Brushback PlayWarm performance fleece • PlayWarm heat transfer at back right • Reebok heat transfer logo • Regular fit
Hoody: Pullover hoody • Self-fabric at cuffs and hem • MGH back neck taping • DTM jersey-lined hood with adjustable two tone drawcord • Contrast eyelets • Pouch pocket with contrast bar tacks
Pant: Open hem pant • Side seam pockets with contrast bar tacks • Two tone drawcord with adjustable waistband • Reebok branded jacquard waistband • Cut-and-sew side panel • Athletic taping at side panel



Team Workout Ready Brushed Back Fleece Pant

Men's Sizes: S, M, L, XL, 2XL, 3XL
R0052

Suggested Retail: \$50.00

Z56343 black
Z56344 gravel melange

Feature/Benefits: Polyester pique • PlayDry • Shaped set-in sleeve • Contrast reverse cover stitch • Shaped side panel



Team Workout Ready PlayDry Polo

Men's Sizes: S, M, L, XL, 2XL, 3XL
R0571

Suggested Retail: \$35.00

Z75035 black/white
Z75037 excellent red/white
Z75036 athletic navy/white
Z75039 tin grey/white
Z75040 team dark green/white
Z75038 reebok royal/white
Z18721 white/white



Team Warm Up Top

Men's Sizes: S, M, L, XL, 2XL, 3XL, 4XL
R0523
Suggested Retail: \$65.00

- I32216 black/white
- I32217 navy/white
- I32220 red/white
- I32218 reebok royal/white
- I32219 team dark green/white
- I32221 light maroon/white

Features/Benefits: 100% polyester textured • Wind and water resistant • Light weight



Team Warm Up Pant

Men's Sizes: S, M, L, XL, 2XL, 3XL, 4XL
R0002
Suggested Retail: \$40.00

- I32222 black/white
- I32223 navy/white



Notes

Sport Essentials LS Compression Top

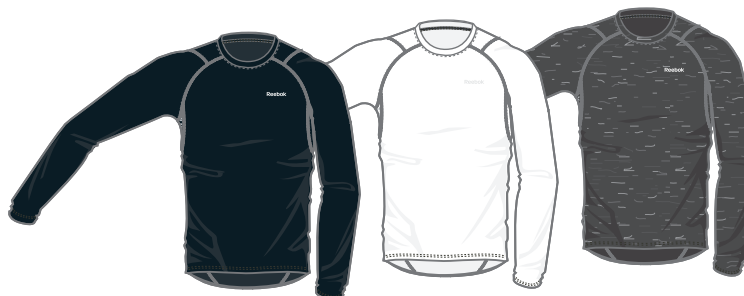
Men's Sizes: S, M, L, XL, 2XL

R0051

Suggested Retail: \$30.00

I32446 black
I32447 white
I32431 dark grey heather

Features/Benefits: 90/10 PlayDry polyester/spandex ▪ Essential hot compression long sleeve top ▪ Flat seam construction ▪ Ergonomic raglan shoulder seams ▪ Compression fit ▪ Heat seal logo



Sport Essentials SS Compression Top

Men's Sizes: S, M, L, XL, 2XL

R0521

Suggested Retail: \$25.00

I32442 black
I32443 white
I32445 dark grey heather

Features/Benefits: 90/10 PlayDry polyester/spandex ▪ Essential hot compression short sleeve top ▪ Flat seam construction ▪ Ergonomic raglan shoulder seams ▪ Compression fit ▪ Heat seal logo



Sleeveless Compression Top

Men's Sizes: S, M, L, XL, 2XL

R0521

Suggested Retail: \$25.00

I32440 black
I15331 white

Features/Benefits: 90/10 PlayDry polyester/spandex ▪ Essential hot compression sleeveless top ▪ Flat seam construction ▪ Ergonomic raglan shoulder seams ▪ Compression fit ▪ Heat seal logo



Women's
Team Warm Up Top

Features/Benefits: 100% polyester textured • Wind and water resistant • Light weight

Women's Sizes: XS, S, M, L, XL, 2XL
R0003
Suggested Retail: \$60.00

- I32214 black/white
- I32215 navy/white
- I32210 red/white
- I32208 reebok royal/white
- I32209 team dark green/white
- I32211 light maroon/white



Women's
Team Warm Up Pant

Women's Sizes: XS, S, M, L, XL, 2XL
R0081
Suggested Retail: \$36.00

- I32212 black/white
- I32213 navy/white



Notes

ZigTech Crew Sock

Features/Benefits: Polyester blend

Sizes: S, M, L, XL

R006

Suggested Retail: \$12.00

| | S (3.5-7) | M (7.5-9) | L (9.5-12) | XL (12.5-15) |
|---------------------|-----------|-----------|------------|--------------|
| black/white | Q25739 | Q25746 | Q25744 | Q25767 |
| white/black | Q25716 | Q25743 | Q25728 | Q25750 |
| athletic navy/white | Q25742 | Q25755 | Q25726 | Q25772 |
| rbk red/white | Q25721 | Q25713 | Q25749 | Q25769 |
| reebok royal/white | Q25722 | Q25717 | Q25719 | Q25777 |



Classic Dropped R Sock

Features/Benefits: Polyester blend

Sizes: S, M, L, XL

R006

Suggested Retail: \$12.00

| | |
|--------|-------------|
| D01427 | black/white |
| D01530 | white/black |



Notes



Customize Your Team Uniforms

need a bit of copy here.

Zig Jersey

RBK03152S

Suggested Retail

Adult: \$82.00

Youth: \$72.00

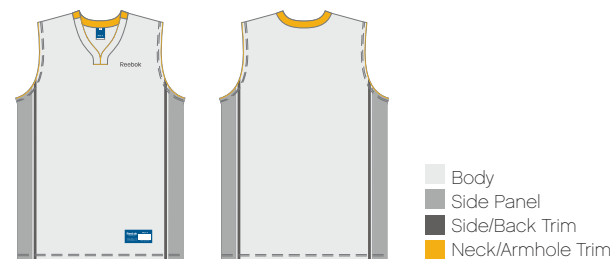
Color Breakout

Body
Side Panel
Side & Back Trim
Neck & Armhole Trim

Features/Benefits: Custom Zig design • Laker neck, wide shoulder vest • Available in men's and women's sizes • Available in micro mock mesh or SmoothFit • Eligible for Reehat program at additional cost



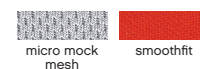
CUSTOMIZATION OPTIONS



Color Availability



Fabric Availability



Zig Short

RBK03224S

Suggested Retail

Adult: \$85.00

Youth: \$75.00

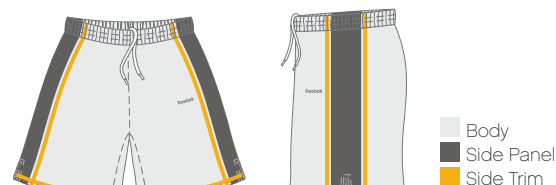
Color Breakout

Body
Side Panel
Side Trim

Features/Benefits: Custom Zig design • Reehat side panels • 10" graded inseam • Available in men's and women's sizes • Available in micro mock mesh or SmoothFit • Eligible for Reehat program at additional cost



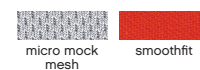
CUSTOMIZATION OPTIONS



Color Availability



Fabric Availability



Encore Jersey

RBK03152

Suggested Retail

Adult: \$62.00

Youth: \$52.00

Color Breakout

Body

Side Panel

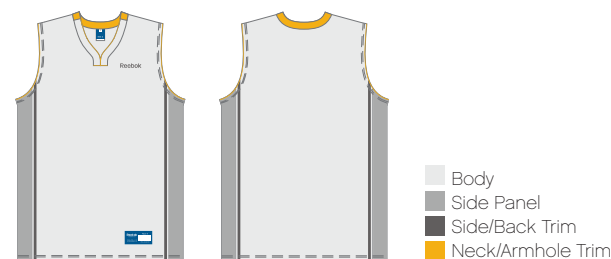
Side & Back Trim

Neck & Armhole Trim

Features/Benefits: Laker neck, wide shoulder vest • Available in men's and women's sizes • Available in micro mock mesh or SmoothFit • Eligible for Reehat program at additional cost



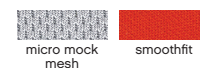
CUSTOMIZATION OPTIONS



Color Availability



Fabric Availability



Encore Short

RBK03224

Suggested Retail

Adult: \$65.00

Youth: \$55.00

Color Breakout

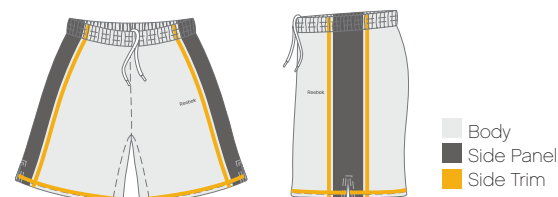
Body

Side Panel

Side Trim



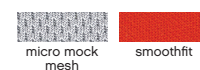
CUSTOMIZATION OPTIONS



Color Availability



Fabric Availability



Vector Shooting Shirt

RBK03143
Suggested Retail
Adult: \$67.00
Youth: \$62.00

Features/Benefits: Custom back and sleeve panels • 1/4 zip • Available in men's and women's sizes • Available in micro mock mesh or SmoothFit • Eligible for Reeheat program at additional cost



Color Availability

WH GD VG TX OR SC CD MR PR NY RY CB KG DG SG BR BK

Fabric Availability

micro mock mesh smoothfit

Flex Shooting Shirt

RBK03142
Suggested Retail
Adult: \$65.00
Youth: \$60.00

Features/Benefits: Custom panel insert • 1/4 zip • Available in men's and women's sizes • Available in micro mock mesh or SmoothFit • Eligible for Reeheat program at additional cost



Color Availability

WH GD VG TX OR SC CD MR PR NY RY CB KG DG SG BR BK

Fabric Availability

micro mock mesh smoothfit

Notes

GENERAL TERMS AND CONDITIONS OF SALE OF ADIDAS AMERICA, INC. AND REEBOK INTERNATIONAL LTD. (COLLECTIVELY THE “COMPANY”)

Orders: These General Terms and Conditions of Sale (the “Terms and Conditions”) apply to and form an integral part of all quotations and offers made by the Company, all acceptances, acknowledgements (including a functional acknowledgement sent on receipt of an electronic order) and confirmations by the Company of any orders by Customer, and any agreements regarding the sale by Company and purchase by Customer of product and services. The Company’s acceptance of orders is based upon these Terms and Conditions. All purchase orders or other procurement documents (including purchase order confirmations, compliance guides, and routing and logistics guides) submitted by Customer shall be governed by these Terms and Conditions. To the extent that any provisions contained in the Customer’s purchase order or other procurement documents conflict with or would change, modify or supplement these Terms and Conditions, these Terms and Conditions will control, even if Company does not expressly contest such provisions and any such conflicting provisions shall be wholly inapplicable to any sale made by Company to Customer and shall not be binding in any way on Company. Without limiting the foregoing, Company further rejects terms and conditions inconsistent with, different from or additional to those contained herein which are contained on any website of Customer for which access is conditioned on acceptance of such terms and conditions. A functional acknowledgement sent on receipt of an electronic order does not constitute acceptance of electronic data interchange orders. Customer’s order of the product will manifest Customer’s agreement to these Terms and Conditions.

Back Orders: Back orders are shipped FOB shipping point. Back orders will not be created for fewer than four (4) pieces.

Allocations: Orders and shipments are subject to allocation by Company in times of product shortages as determined by Company in its sole discretion.

Cancellations: Requests to cancel orders must be made in writing no later than forty-five (45) days before the start ship date and are subject to Company’s approval. All cancellations and refusals may be subject to a restocking/processing fee. Cancellations exceeding ten percent (10%) of futures bookings will result in evaluation of future discounts. Container and direct ship orders are not cancellable.

Changes in Orders: Changes in orders will be considered only (a) within thirty (30) days of order submission in the case of container or dedicated orders, or (b) no later than forty-five (45) days prior to the first shipment date indicated on the order in the case of warehouse orders.

Pricing: All pricing error claims must be submitted to Company within thirty (30) days of the applicable invoice due date. All pricing error claims submitted within this timeframe will be reviewed, and approved or denied based on the merits of the claim at the sole discretion of Company. All pricing error claims submitted beyond this timeframe will be automatically denied. No employee, company representative or any other party other than an officer of Company is authorized to alter Company’s pricing and other terms and conditions of sale. All prices are subject to change without notice. Orders will be billed at prices prevailing at the time of order as reflected on Company’s then current price lists.

Shipping: Freight terms are FOB shipping point for all domestic shipments and FOB port for direct shipments, unless otherwise approved in writing by Company. Customer assumes all risk of loss upon delivery of products by Company to Customer or Customer’s representative. All delivery indications are estimates only. In no event will Company assume any liability, consequential or otherwise, as a result of Company’s failure to deliver product in accordance with indicated delivery schedules. Delivery of part of an order does not obligate Company to make further deliveries, and partial deliveries will be billed when made.

Terms of Sale: Payment terms are net thirty (30) days from invoice date, unless otherwise specified. Any amounts not paid within net terms are subject to a service charge of 1-1/2 % per month or the maximum rate permitted by law, whichever is lower. No cash or prompt payment discounts will be allowed on any invoice paid past the invoice discount period. Customer shall not set off against or deduct from any amounts due to Company hereunder all or any part of any amounts owed or alleged to be owed by Company to Customer. Chargebacks will not be accepted by Company unless agreed to in writing between Company and Customer. If Company, in its sole discretion, at any time is unsatisfied with Customer’s financial responsibility, or feels it needs further assurance that Customer will pay for outstanding orders, Company shall be entitled to require Customer to pay for its orders on a cash-in-advance basis. If Customer is in default under any agreement with Company, or fails to comply with any written rule or policy of Company, including these Terms and Conditions, Company shall have the right, without prejudice to any other legal remedy, to cancel all outstanding orders. Company shall have the right to set off and deduct any amounts due to Company from Customer against and from any amounts owed or allegedly owed by Company to Customer.

General Returns Policy: All returns must be pre-approved by Company Returns Department. Requests for approval of returns must be received in writing by the Returns Department within thirty (30) days of the applicable invoice date.

Customer accommodations and refused shipments may be subject to a fifteen percent (15%) restocking fee. Additional charges will be assessed for footwear that requires reboxing or apparel that requires rebagging or untagging prior to its return to Company stock. Company also reserves the right to charge for removal of value added services (like labeling, ticketing, and special packaging) on returned product.

All returns must be accompanied by a Return Authorization Form, available from the Returns Department, and comply with all instructions provided by the Returns Department. The Return Authorization Number must be clearly marked on the outside of the shipping carton and/or on the face of the shipping documents. Any returns not bearing the Return Authorization Number or not accompanied by a Return Authorization Form will be shipped back to Customer at Customer’s expense.

All returns must be shipped prepaid at Customer’s expense. In addition, Customer will be responsible for any handling charges incurred by Company as a result of a return.

Defective Returns Policy: Whether product is defective will be determined in Company’s sole discretion. If Company determines that product is defective, Company will reimburse Customer for reasonable freight charges upon receipt of a freight bill.

Loss/Damage in Transit: Company will not be responsible for goods lost or damaged in transit. Any damage or shortage in carton count must be noted on the carrier’s delivery receipt and reported directly to the delivering carrier.

Concealed Shortages/Overages: In order to make a claim for any shortages/overages in unopened cartons, such claim must be reported to Company’s Credit Department in writing within thirty (30) days of the applicable invoice due date. All claims must be accompanied by an invoice, carton identification number and shipping order number and an itemization of all shortages/overages by product code, size, and quantity.

Packing Errors: In order to make a claim for packing errors, such claim must be reported to the Company’s Credit Department in writing within thirty (30) days of the applicable invoice due date. All claims must contain the carton identification number.

Customer’s Covenants: Customer agrees to (a) render prompt, effective and courteous service with respect to the sale of Company goods, including all services to which a retail customer of Company goods is entitled; (b) vigorously and aggressively encourage the retail sale of Company goods; (c) maintain the minimum sales volume established by Company from time to time; (d) establish and maintain, independently and in conjunction with Company, advertising and marketing policies and methods that emphasize the high-quality characteristics of Company’s goods; (e) provide clean, modern and adequate retail outlet(s) necessary for proper merchandising and selling of Company goods; (f) attend presentations conducted by Company sales representatives for the purpose of acquiring knowledge about the technical and other aspects of Company products; and (g) notify Company’s Credit Department in writing prior to any change in Customer’s legal organization, method of doing business or any other information stated in the credit application filed by Customer.

Trademark & Intellectual Property Rights: Customer acknowledges that Company is the owner of all intellectual property associated with Company products, including all trademarks, copyrights, patents and trade secrets otherwise owned by Company (the “Intellectual Property”). Customer obtains no rights to the Intellectual Property. Customer obtains no ownership or license rights to Company’s trademarks, trade names, logos or designs (“Trademarks”) or copyrights except as specifically stated in these Terms and Conditions. Customer may not use the Trademarks, or any marks similar to the Trademarks, in any way without Company’s express written consent. Company claims a copyright in the written materials delivered to Customer under these Terms and Conditions, including any designs, drawings and logos. Company grants to Customer a royalty-free right and license to use and display Company’s Trademarks and copyrights and the product information, specifications, data, and images provided by Company, but only to the extent required for the Customer to promote and sell Company’s products under these Terms and Conditions.

Restrictions on Sales/Purchases/Assignment: Customer will not (a) sell, transfer or assign its right as an authorized Company dealer without the express written consent of Company; (b) sell or otherwise transfer or transship Company goods to another retailer, distributor, or broker; or (c) purchase Company products from any source other than Company. Additionally, Customer may only resell Company products (apparel, footwear and accessories) through the outlet location(s) specified in the Credit Application or subsequently approved in writing by Company. Any other form of resale of Company products other than as specified above shall be prohibited without the prior written approval of Company. Such prohibitions shall include, but not limited to, the following: Customer may not resell Company products (visible or encapsulated) through any electronic means (regardless of the medium and including the Internet), the mail, by catalog, or by phone. Such right, if granted, is limited to sales and deliveries within the United States. Further, Customer may not advertise Company products through any electronic means unless such advertisement directs purchase and fulfillment of Company products specifically at the location(s) approved in the Credit Application or subsequently approved in writing by Company. Violations of the aforementioned conditions may result in the immediate termination of Customer’s account and cancellation of existing orders. Further, if Customer opens or acquires additional retail outlet(s), Customer must notify and receive written approval from their sales representative before any additional or new outlet or franchise can be opened. Company’s approval of a new outlet or franchise does not guarantee Company approval of any other outlet or franchise location.

No Transshipment/Diversion of Merchandise and No Sale of Counterfeit Product: To enhance informed selection and promote product image, Company only sells to selected retail outlets on the express condition that such outlets may not: (1) resell to any person or entity who is not also the final user or consumer or (2) sell or purchase any counterfeit Company product. Accordingly, the resale, transshipment or any form of diversion of Company product to anyone other than the final consumer and the sale or purchase of any counterfeit Company product are expressly prohibited. Any such activity may subject the violator to termination of its account and/or cancellation of orders, and shall constitute a breach of the contract of sale for which Company may seek the appropriate legal remedies, including money damages or injunctive relief.

Termination: The Company may, at any time and in its sole discretion, immediately terminate or suspend its relationship with Customer. Termination includes, but is not limited to cancelling or refusing to ship any orders placed by Customer and terminating Customer’s ability, if any, to purchase goods on credit or otherwise.

Claims: All claims must be submitted to the Company within thirty (30) days of the applicable invoice due date unless otherwise specified within this document or detailed on a separate binding agreement made by both parties. Any claims received after this date will not be considered.

Limited Warranty: Company warrants that its products, at the time of shipment, are free from defects in workmanship and materials. THE WARRANTY DESCRIBED IN THIS SECTION SHALL BE IN LIEU OF ANY OTHER WARRANTY, EXPRESS OR IMPLIED. ALL GOODS PURCHASED PURSUANT UNDER THESE TERMS AND CONDITIONS ARE SOLD AS-IS. COMPANY HEREBY DISCLAIMS ANY AND ALL IMPLIED WARRANTIES, INCLUDING THE WARRANTIES OF MERCHANTABILITY AND FITNESS FOR A PARTICULAR PURPOSE AND THOSE THAT MAY ARISE BY COURSE OF DEALING, COURSE OF PERFORMANCE OR USAGE OF TRADE. Customer’s remedies are exclusively limited to replacement of or credit for any defective product (at the sole option of Company) but such replacement or credit shall be made only if the Customer complies with the terms and conditions set forth herein on general returns and defective returns.

Limitation on Damages; Statute of Limitations: COMPANY WILL NOT BE LIABLE FOR ANY LOSS OF PROFIT, INTERRUPTION OF BUSINESS OR ANY OTHER SPECIAL, CONSEQUENTIAL OR INCIDENTAL DAMAGES SUFFERED OR SUSTAINED BY CUSTOMER. Any action by Customer related to these Terms and Conditions, including for breach of contract, must be commenced within one year from the date of delivery of the goods.

Security Agreement: To secure payment and performance of all of Customer’s current and future obligations to Company, Customer grants to Company a security interest in all inventory and equipment that Customer has purchased or will at any time in the future purchase from Company and in all accounts, other forms of receivables, documents, instruments, returns and general intangibles that are related in any way to such inventory and equipment. A copy of Customer’s credit application may be filed as a financing statement in which case Customer is the debtor and Company is the secured party. If, in Company’s judgment, Customer loses the financial ability to pay and perform all of Customer’s current and future obligations to Company under these Terms and Conditions, then, upon demand by Company, Customer will return all Collateral to Company for disposition in accordance with the Uniform Commercial Code.

Entire Agreement: Customer’s credit application along with these Terms and Conditions contain the entire understanding between the parties. Customer acknowledges that there are no terms, conditions, warranties or representations from or by Company other than those contained in the credit application and these Terms and Conditions.

Modifications: No supplement, modification or amendment of Customer’s credit application or these Terms and Conditions will be binding unless executed in writing by an officer of the Company. These Terms and Conditions are subject to change by Company without prior notice.

Customer Terms and Conditions: The Company rejects Customer terms and conditions, including those contained in purchase order confirmations, compliance guides, and routing and logistics guides, unless Company specifically agrees to such terms in writing.

Customer Routing and Logistic Requirements: Company will not be bound to terms, directives or requirements set forth by Customer through routing and logistic guides unless Company has agreed in writing to such terms, directives or requirements. In addition, Customer may incur charges for value added services, such as labeling, ticketing, and special packaging. Routing and logistics guides should be directed to the Compliance Department located at Company’s Customer Satisfaction office in Spartanburg, South Carolina.

Severability; Waiver; Construction: Any portion of these Terms and Conditions that are found to be unenforceable will not invalidate the remainder of these Terms and Conditions. Any delay in enforcing or any failure to enforce any provision of these Terms and Conditions will not be deemed a waiver of any other or subsequent breach of these Terms and Conditions unless such waiver is in writing and signed by Company. Caption headings are for convenience of reference only and will not affect the interpretation of these Terms and Conditions. Ambiguous terms will be construed without regard to authorship.

Confidentiality : Except as required by law, Customer will not disclose Company’s Confidential Information to any third party, directly or indirectly, without Company’s prior, written consent. Confidential Information is described generally as any and all current and future product information, roadmap, technical or financial information and other business information including, but not limited to reports, plans, documents, drawings, machines, tools, models, patent disclosures, samples, and materials, and Request For Proposals that may be disclosed between the parties whether in written, oral, electronic, website-based, or other form, designated by Company in writing as confidential. If Customer is required by any law or regulation, judicial or administrative process to disclose Confidential Information, Customer shall promptly notify Company so that Company has a reasonable opportunity to oppose such requirement or process. Customer shall promptly notify Company of any actual or suspected misuse or unauthorized disclosure of the Confidential Information.

Force Majeure: If a delivery date is specified, that date will be extended to the extent that delivery is delayed by reason of fire, flood, war, riot, strike, natural disaster, or any other event beyond Company’s reasonable control and if, as a result of such a delay, the goods ordered are unavailable, Company may substitute comparable goods. Additionally, in the event of a freight strike beyond Company’s control, Company may ship goods via another carrier without being subject to any penalties.

Assignment: Company may assign this contract to a parent, subsidiary, or affiliated firm, or to another entity in connection with the merger, sale or transfer of all or substantially all of its business. Subject to these restrictions, the provisions of the contract shall be binding upon and inure to the benefit of the parties, their successors, and permitted assigns.

Costs and Attorney Fees; Choice of Law; Consent to Jurisdiction:

For collection matters: (1) Customer will pay such costs, collection agency commission, expenses and reasonable attorney fees (including, without limitation, at trial and on appeal) as Company may incur in any manner of collection of any sums past due; (2) Oregon law (without resort to its choice of law provisions) will govern; and (3) Customer consents to the nonexclusive jurisdiction of and venue in any state or federal court located in the state of Oregon or South Carolina.

For all adidas America, Inc. non-collection matters: (1) these Terms and Conditions shall be governed and enforced in accordance with the laws of the state of Oregon and (2) Customer consents to the exclusive jurisdiction and venue in any state or federal court located in the state of Oregon.

For all Reebok International Ltd. non-collection matters: (1) these Terms and Conditions shall be governed and enforced in accordance with the laws of the Commonwealth of Massachusetts and (2) Customer consents to the exclusive jurisdiction and venue in any state or federal court located in the state of Massachusetts.

Reebok

1895 J.W. FOSTER BOULEVARD

CANTON, MASSACHUSETTS 02021

1.800.228.7867

1.781.401.5000

WWW.REEBOK.COM